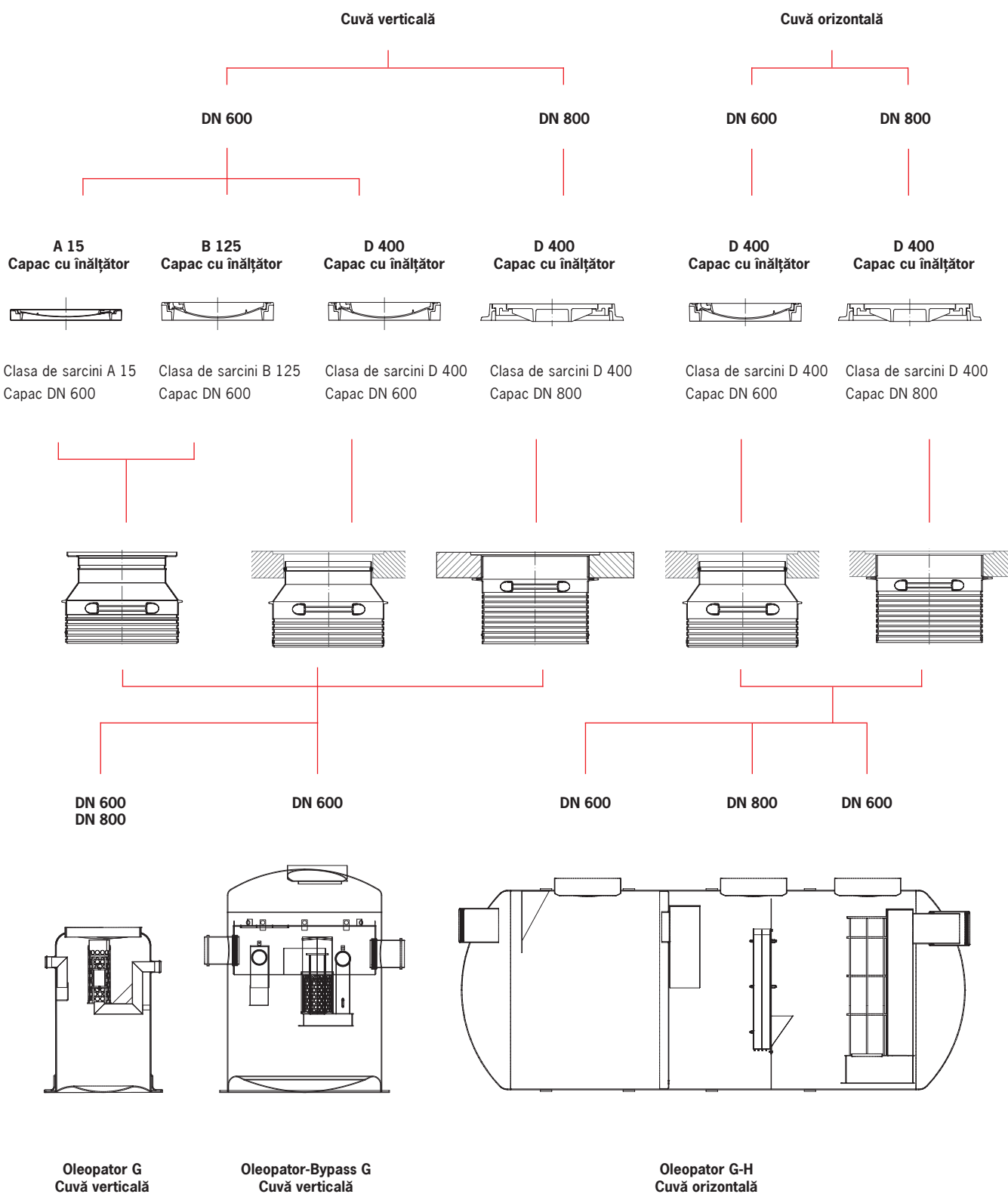


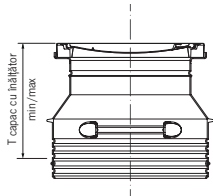
**Separatoare de lichide ușoare - Concept de asamblare**

**Părți componente**



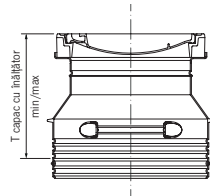
**Capac cu înălțător DN 600**

**A 15**  
**Capac cu înălțător**



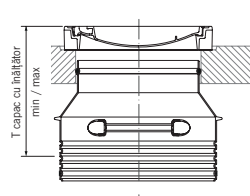
Clasa de sarcini A 15  
 Capac DN 600

**B 125**  
**Capac cu înălțător**



Clasa de sarcini B 125  
 Capac DN 600

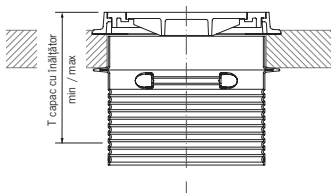
**D 400**  
**Capac cu înălțător**



Clasa de sarcini D 400  
 Capac DN 600

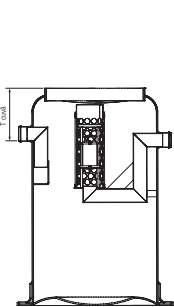
**Capac cu înălțător DN 800**

**D 400**  
**Capac cu înălțător**

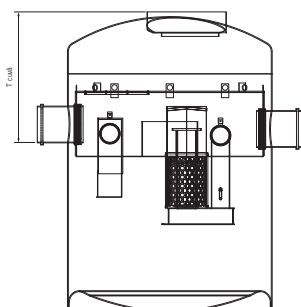


Clasa de sarcini D 400  
 Capac DN 800

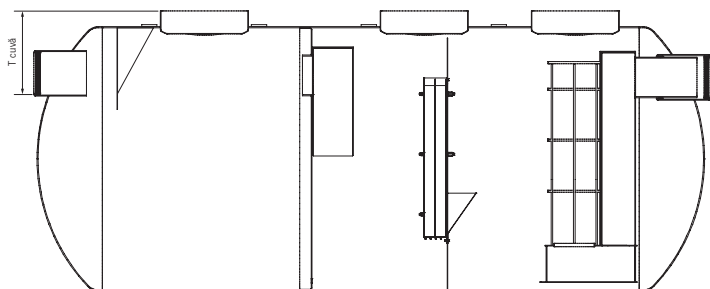
**Cuvă**



**Oleopator G**  
**(Cuvă verticală)**



**Oleopator-Bypass G**  
**(Cuvă verticală)**



**Oleopator G-H**  
**(Cuvă orizontală)**

**Calculul adâncimii de instalare (T)**

$T_{total} = T_{cuvă} + T_{Capac\ cu\ înălțător\ (min - max)}$